

# C31 SERIES OVERVIEW

## CELINA PROspan Fabric Structures (E Series)



### Description

CELINA's PROspan Fabric Structures (E Series) are an ideal solution for temporary or even permanent space and are just as durable as traditional buildings. Our entire product range of structures offer a rapid and economical solution for almost all requirements. The PROspan (E Series) focuses on flexibility, quality, sustainability, and reliability. Thanks to flexibly configurable dimensions, you can easily accommodate everything under one shelter. Our shelter systems are designed to meet stringent requirements of both USA and Europe specifications. These structures are multi-functional in field operations and can be deployed as accommodation, command post, dining hall, hangar and storage tents, as well as for maintenance of your aircraft and vehicles.

### Features

- Tan 686A (color #33446) or camouflage green 483 fabric color options
- Pre-Engineered aluminum alloy frame support system
- Ridge and eave connectors made of galvanized steel
- Fully relocatable and ground deployable
- Pre-assembled hardware minimizes on-site assembly
- Integrated keder tracks for simple fabric attachment
- Modular design allows for expandability
- Adjustable length in 5 m (16'4") increments

### Intended Uses

- General purpose
- Storage
- Maintenance
- Aircraft
- Vehicle
- Personal use (Gyms, DFAC)

### Specifications

- Wind load standards according to DIN EN 13782
- Snow load (floor) 105 kg/m<sup>2</sup> (21.5 lbs/ft<sup>2</sup>)
- Snow load (roof) 84 kg/m<sup>2</sup> (17.2 lbs/ft<sup>2</sup>)
- Water resistant, flame retardant fabric

### Optional Add-Ons

- Additional snow load kit
- On-site installation including SME training and support options
- Annually, quarterly, or monthly maintenance

### Fabric

- USA made Berry Amendment compliant fabric



### Frame

- German made environmental site compliant frame



# C31 SERIES OVERVIEW

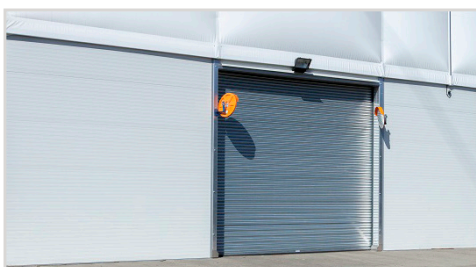
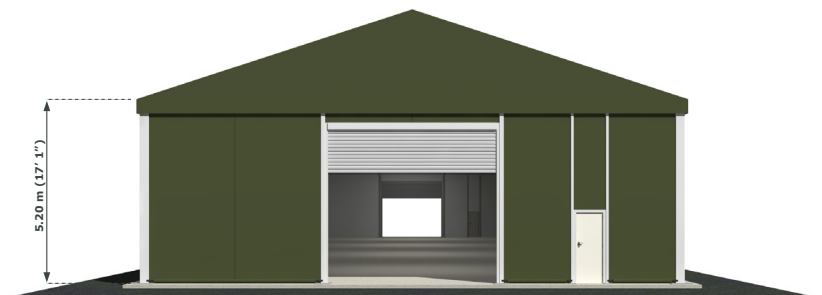
## CELINA PROspan Fabric Structures (E Series)



	15 Series		20 Series		25 Series	
Standard Size	15 m x 40 m		20 m x 40 m		25 m x 40 m	
SKU	C31015X040		C31020X040		C31025X040	
	Metric	Imperial	Metric	Imperial	Metric	Imperial
Width	15 m	49.21'	20 m	65.62'	25 m	82.02'
Length	40 m	131.23'	40 m	131.23'	40 m	131.23'
Ridge (Apex) Height	7.63 m	25.03'	8.45 m	27.72'	9.30 m	30.51'
Eave Height	5.20 m	17.06'	5.20 m	17.06'	5.20 m	17.06'
Bay Distance	5.0 m	16.40'	5.0 m	16.40'	5.0 m	16.40'
Snow Load (Floor)	105 kg/m <sup>2</sup>	21.5 lbs/ft <sup>2</sup>	105 kg/m <sup>2</sup>	21.5 lbs/ft <sup>2</sup>	105 kg/m <sup>2</sup>	21.5 lbs/ft <sup>2</sup>
Snow Load (Roof)	84 kg/m <sup>2</sup>	17.2 lbs/ft <sup>2</sup>	84 kg/m <sup>2</sup>	17.2 lbs/ft <sup>2</sup>	84 kg/m <sup>2</sup>	17.2 lbs/ft <sup>2</sup>
Main Aluminum Profile	252 x 122 x 4 mm		334 x 122 x 4, 5/8 mm		334 x 122 x 4, 5/8 mm	

### Standard Shelter Kit Includes

- Overhead roll up door, 2 units
- Single personnel door, 2 units
- Electrical panel with power receptacles, 1 system
- High bay LED warehouse lighting, 1 system



Overhead roll up door  
4.88 m x 4.20 m (16' 0" x 13' 8")



Single personnel door  
1 m x 2.125 m (3' 3" x 6' 12")



Pre-Engineered aluminum alloy frame support system